

PONDering

Freshwater Preservation

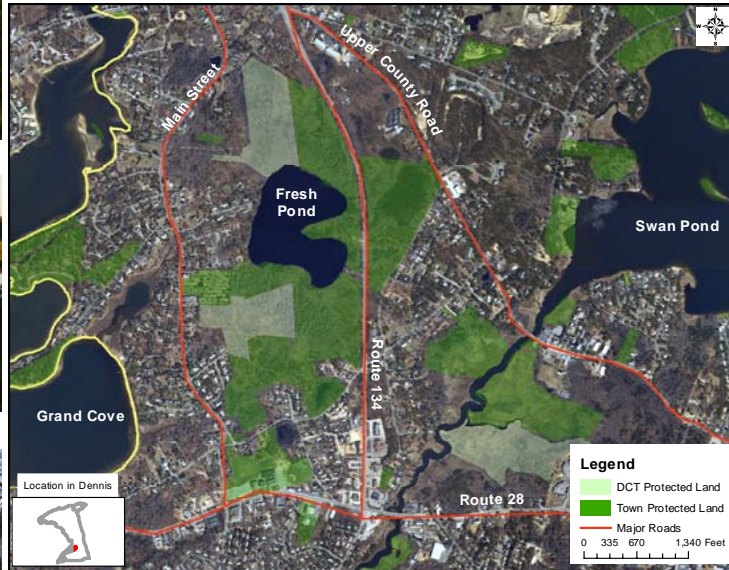
Dennis Conservation Trust

www.dennisconservationtrust.org
E-Mail: CompactK@Cape.com

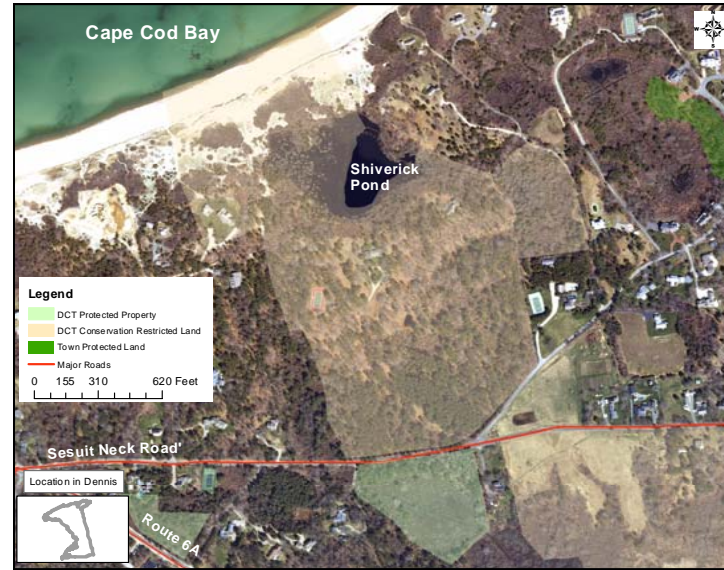
P.O. Box 67
Dennis, MA 02641
(508) 362-3422

Aerial Maps of Dennis Protected Land Abutting Freshwater Ponds

DCT Owned & Town Owned Abutting Land



DCT Private Conservation Restriction



DCT Conservation Restriction over Town Land



Shiverick Pond



Coles Pond



Fresh Pond



The Plymouth Gentian is a threatened species and can be found on the edges of Coles Pond



Fresh Pond



Shiverick Pond



Coles Pond



Spotted Turtle

Giving is Saving How you can help protect your pond!

Become a Member of your Local Trust: Your annual membership dues help us fund the costs of title searches, property surveys, registry fees, and most importantly, acquisition of open space.

Gift your Land: Donate land abutting ponds to the Trust, a 501 (c) (3) non-profit organization. Land and financial donations are tax-deductible.

Leave a Legacy: Your pond front property can be willed to the Trust. Estate taxes will be reduced for your heirs because the land's value will be subtracted from the taxable portion of the estate.

Establish a Conservation Restriction: Retain your privacy and ownership while extinguishing development rights on all or part of your property..

Consider a Charitable Sale: Sell your land for conservation purposes at less than the appraised value and claim the difference as a charitable deduction on your federal income tax return.

Protected Ponds Create an Edge Effect

The combination of freshwater and riparian habitats creates edges attractive to wildlife. A greater diversity of wildlife species including both mammals and birds feed, breed or seek shelter along habitat edges than exist in a uniform, single, isolated habitats.

“The edge effect contributes to ecological diversity. The value of habitats, particularly forested habitat, is improved for most wildlife species when they are adjacent to open areas.”—UMASS Cooperative Extension Guide

Land Protected In Fee	340- acres
Conservation Restricted Lands	150- acres
DCT Total Acres Protected	490- acres